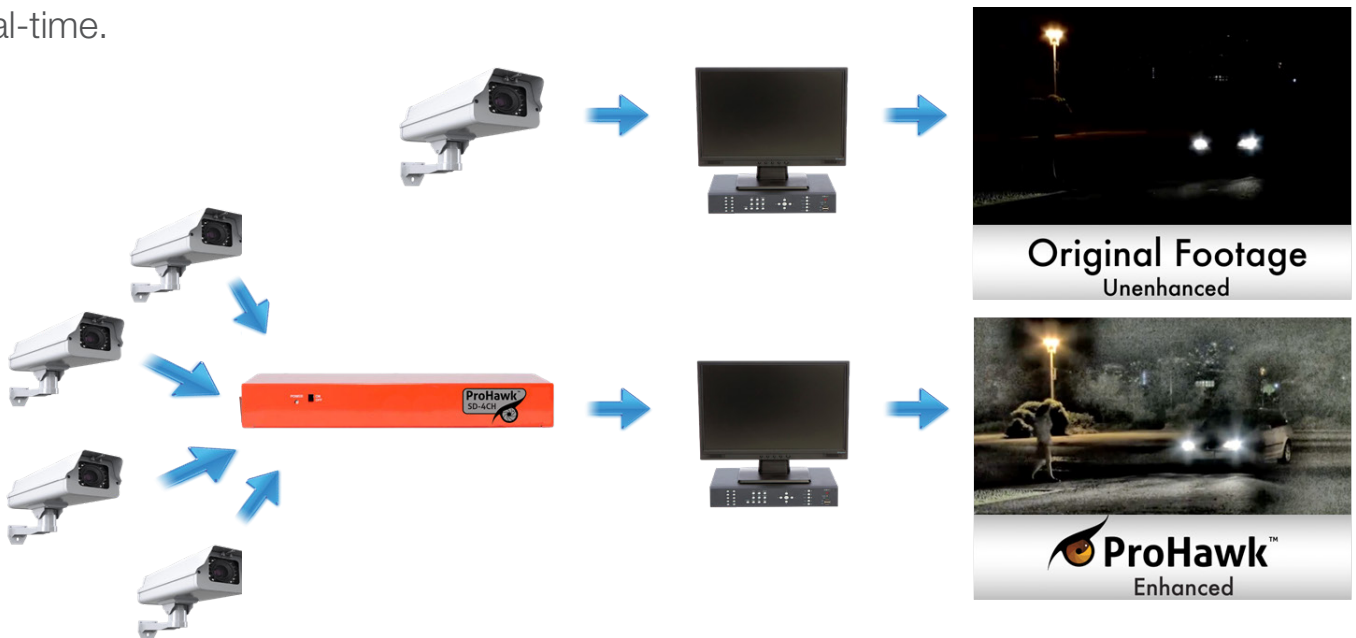


What is ProHawk™?

ProHawk is a real-time, video enhancement and analysis technology that provides clarity for enhanced decision making. ProHawk utilizes powerful processors and sophisticated software algorithms to enhance video images captured under challenging conditions - in real-time.



What can ProHawk enhance?

ProHawk can minimize the effects of severe climatic conditions, unfavorable lighting and other environmental difficulties. ProHawk is effective for enhancing images impaired by:



Light






Weather






Environment

Where can ProHawk be used?

ProHawk is versatile, plug & play and easy to control. ProHawk is able to offer real-time video image enhancement to a host of different applications including:

-  Security & Surveillance
-  Government
-  Military

-  Industrial
-  Transportation
-  Maritime-Subsea

Three reasons to choose ProHawk:

1. We support four concurrent channels of standard definition video resolution
2. Our sophisticated algorithms have widespread applications
Support for all types of environmental conditions
3. ProHawk™ solutions use very powerful hardware
Field Programmable Gate Arrays are 50 - 100 times more powerful than the CPU typically used by our competitors

ProHawk™ Standard Definition, 4CH, Analog

Input	Input Image	4 Channels (Concurrent Input)
	Format	NTSC-N/NTSC-M
	Type	Analog Composite
	Connector	BNC
Output	Output Image	4 Channels (Concurrent Output)
	Format	NTSC-N/NTSC-M
	Type	Analog Composite
	Connector	BNC
Video Processing	Throughput	Variable dependent on channel synch delay and processing options, typical 2-3 frames
Control	External Control	RS232C RS422 RS485 Ethernet
	Connector	D-SUB9p(F) Terminal RJ-45
Environment	Operating / Storage Temperature	Operating: 0°C to 40°C Storage: -20°C to 65°C
	Operating / Storage Humidity	Operating: 10% to 80%RH, non condensing Storage: 5% to 95%RH, non condensing
Power	Voltage / Current	DC12V 3.34A (40W Max)
	AC adapter	100 to 240VAC Full Range 47 to 63 Hz 40W - 45W
Specifications	Dimensions and Weight	W: 305mm x D: 191mm x H: 44mm, 1U Rackmountable, 1.8 kg

Want to find out more?

To find out more about what ProHawk could do for you, please visit our website:
www.iacritas.com or contact us at:

Phone: +1-855-ProHawk (776-4295)

Email: info@iacritas.com



PH_4CH_DS_US_2.1